



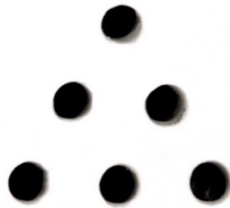
PRESS-KIT [EN]

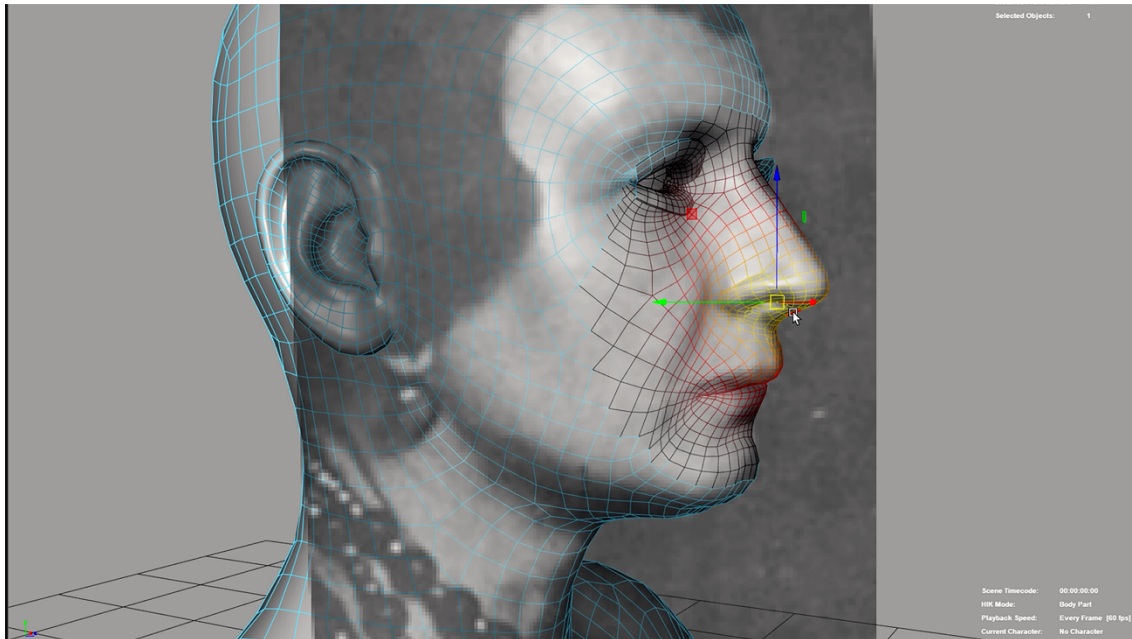
ALREADYMADE

Directed by Barbara Visser

Produced by: Monique Busman, Tomtit Film

VPRO, NPO-fund, COBO, Netherlands Film Fund (Incentive)





Still from *Alreadymade*, constructing Elsa von Freytag

Logline, synopsis

Was it marketing, mystification or misogyny which caused the steep rise of the artwork *Fountain*? What started out as a lost piece of anti-art by an anonymous creator, eventually became the most influential artwork of the 20th century. Speculations about a female author come and go. Who is she? And what is true, or even real, in this case?

The doubts about the origins of this 'readymade' artwork have increased in parallel with the value of the numerous copies circulating the venues for modern art. Can the discovery of a single letter change that into an attribution to a woman way ahead of her time? In *Alreadymade*, originality, authorship and identity are challenged, just as *Fountain* of 1917 did a century ago, only this time by using today's tools. Voices attributing the work to Elsa von Freytag-Loringhoven, also known as The Baroness, are drawing increased attention as there are historical wrongs to set right with female contributions in art. Or is it wishful thinking?

Alreadymade itself takes on the form of a 'readymade', intricately weaving its story with found material from many different sources, thus embodying the content of the film in its form.

Original title:	Alreadymade
English title:	Alreadymade
Filmed in:	Netherlands/ France/ Germany
Produced by:	Tomtit Film
In co-production with:	VPRO
With the support of:	Het Nederlands Filmfonds, de Nederlands Film Production Incentive, NPO-fond, CoBO
Wereld première / world premiere:	ntb
Public screening dates:	ntb
Uitzenddatum / broadcast date:	2024 VPRO; ntb
Viewing link NL:	link; tzt toevoegen
Viewing link EN subs:	ink; tzt toevoegen
	ww: Tomtit
Poster/stills:	link naar WeTransfer
Contact:	: hello@tomtitfilm.com – Mylene Esmeijer
Distribution:	Cinema Delicatessen – www.cinemadelicatessen.nl Contact: Anne Vierhout/Daan Vermeulen
Sales agent:	CAT&Docs – www.catndocs.com Contact: Maëlle Guenegues

TECHNICAL SPECS

Film length: 1:26:09
 Color/black-white: both
 Spoken language: Dutch, German, English, French

CREW CREDITS

Director | Barbara Visser

DOP | Gregor Meerman, Joost van Herwijnen

Sound | Siebren Hodes

Sound design & Mix | Tijn Hazen

VFX | Luuk Meijer, David van Heeswijk, Het Nieuwe Kader, Tim de Haan, Niels Bosch, Hert
Zollner, Berko Mulder

Dramaturgy | Luca van Bambost

Research | Bart Haensel, Fem Verbeek, Lola Beekhuijzen, Andrea Wiarda, Ray Segal, Ilja Willems, Hank O'Neal, Julia van Haaften, Petra Ponfoort, Marie Camdessus

Models | Iris Marie Vermeulen

Music advisor | Bell Music

Musicians | Artem Belogurov, Menno van Delft

Produced | Zelda Nieuwenhuis, Judith Reuten

Productieleiding | Julia Klaver, Mylène Esmeijer

Mediamanager | Rob Maas

Additional editing | Xander Nijsten, Menno Otten

Productie VPRO | Brigit Dopheide Eindredactie VPRO | Barbara Truyen, Thomas Vroege

Executive producer | Monique Busman

Elsa cast | Rex Collins Susanne Ohmann, Birgit Welink, Elisa Ueberschar, Masha Tokareva, Saskia Rudat, Sylta Fee Wegman, Victoria Mayer

VR voices | Bartho Braat, David Brukker, Kelly Bartnik, Noah Voelker, Patch Stroband, Susanne Ohmann

Extra voices | Sigrun Schumacher, Voiceguycarter, Gussyscrotch

Actors | Judith Engel, Aljoscha Stadelmann



Setphoto, Marcel Duchamp exhibition at MMK Frankfurt, 2022